

# Your washing machine

**Congratulations** – You have chosen a modern, high-quality home appliance from Bosch. The washing machine features both water and energy savings.

Every machine that leaves our factory is carefully tested for function and perfect condition.

## Contents

■ Intended use	1
■ Cycles	1
■ Preparation	2
■ Setting cycle	3
■ Washing	3/4
■ After washing	4
■ Individual settings	5
■ Important information	6
■ Overview of programs	7
■ Care	8
■ Instructions in display panel	8
■ Warranty	9
■ What to do if ...	10
■ Important Safety instructions	11/12
■ Warranties	13

## Environmental protection/ Tips for energy saving

– We recommend **HE (High efficiency)** detergents because they are particularly designed to deliver optimum performance from your front-loading washer. **Not using HE detergent could cause problems such as oversudsing, extended cycle periods, or a decrease in wash performance.**

- Utilize the maximum amount of laundry for the appropriate cycle.
- Avoid using too much detergent.
- Add detergent according to manufacturer's instruction and water hardness.
- If the laundry will be dried in a dryer afterwards, select spin speed according to the dryer manufacturer's instructions.

## Intended use

- exclusively for private residential use,
- for washing machine-washable fabrics in sudsy water, and energy savings.
- for operation using cold and hot (140 °F/60 °C) tap water and conventional additives that are suitable for use in residential washing machines.

- ⚠ Never leave children unattended by the washing machine!
- Keep children away from shipping carton and packaging components. Danger of suffocation from plastic foil and folding cartons.
- Keep pets away from the washing machine!

## Cycles

Detailed cycle overview → Page 7.  
Temperature and spin speed can be selected individually depending on the cycle selected and cycle progress.

<b>Cotton</b>	} sturdy fabrics
<b>Permanent press</b>	
<b>KIDSCARE</b>	
<b>Sanitary</b>	
<b>Wool</b>	hand/machine washable wool
<b>Sports Wear</b>	microfiber fabrics
<b>Silk/Satin</b>	delicate washable fabrics
<b>Quick wash</b>	short cycle
<b>Hand wash</b>	hand washable fabrics
<b>Dark Colors</b>	dark washable fabrics
<b>Delicates</b>	delicate washable fabrics
<b>Drain</b>	drain water without going through a spin cycle ( <b>no spin</b> )
<b>Spin</b>	extra spin with variable spin speed
<b>Refresh</b>	extra rinse with spin
<b>Soak</b>	integrated soak cycle for pre-treating of heavily stained items

## Preparation

⚠ Install machine correctly according to separate installation instructions.

### Check machine

- Never start a damaged machine!
- Contact your customer service!

### Plug machine into power outlet

- ⚠ Only with dry hands!
- ⚠ Only touch the plug!

### Open water tap

Dispenser for liquid detergent (depending on model), Page 6.

Dispenser II: Detergent for main wash, water softener, spot remover

Dispenser II: Fabric softener, starch

## Sort laundry and fill washer

Follow care instructions of the manufacturer! According to the care instructions tag. According to type, color, soiling and temperature. Do not exceed maximum load → Page 7.

Pay attention to important information! Page 6!

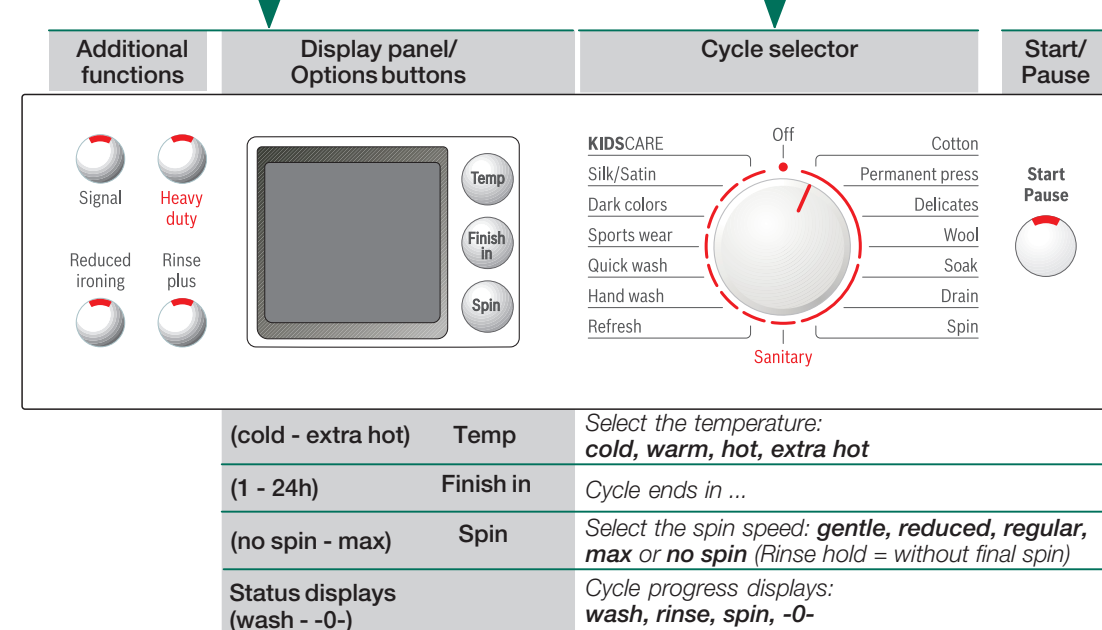
### Fill detergent and fabric softener

Measure detergent according to: Size of wash load, amount of soiling, water hardness (contact your local water supplier) and manufacturer's instructions. For models without dispenser for liquid detergent. Fill the liquid detergent in the appropriate measuring container and place in the drum. During operation: Be careful when opening the dispensing drawer!

Thick fabric softeners or stiffeners should be thinned with water. Prevents clogging. We recommend **HE (High efficiency)** detergents.

## Setting and adjusting cycle

Auxiliary functions and option buttons, see individual settings → Page 5.



### Select Start/Pause

All buttons are sensitive and only need to be touched briefly! Continued pressing of the option button causes automatic sequence of the setting options.

Cycle selector for turning the machine on and off and to select the cycle. Possible to turn in both directions.

## Washing



## Remove laundry

Open loading door and remove laundry. Falls **no spin** (spin stop = without final spin) active: Select spin speed or set cycle selector to **Drain** or **Spin**. Select **Start/Pause**. Remove any existing foreign objects – Risk of rust.

## Close water taps

## Turn off

Set cycle selector to **Off**.

## Cycle end if ...

... -0- is indicated on the display panel.

## Change cycle ...

If you mistakenly selected the wrong cycle:

- Select the cycle again.
- Select **Start/Pause**.

## Interrupt cycle ...

- Select **Start/Pause**.
- If necessary add more laundry. (Do not leaving loading door open for a long period of time, water could run out of the washing machine.)
- Select **Start/Pause**.

## ... or stop cycle

- For cycles with high temperature:
- Cool down wash: Select **Refresh**.
  - Select **Start/Pause**.
- For cycles with lower temperature:
- Select **Spin** or **Drain**.
  - Select **Start/Pause**.

## Individual settings

### Option buttons

The spin speed and temperature can be changed before and while the cycle is running. Effect depends on cycle progress.

### Temp

The displayed wash temperature can be changed. The maximum wash temperature that can be selected depends on the cycle that was set.

### Finish in

When selecting the cycle, the respective time until the end of the cycle is displayed. Adjustable in hour steps, up to a max. of 24h. Select the **Finish in** button until the desired number of hours is displayed (h=hour). Select **Start/Pause**. No setting possibilities after cycle begins.

### Spin

The displayed spin speed can be changed. The maximum spin speed that can be selected depends on the cycle that was set.

### Auxiliary functions

refer also to cycle overview

### Heavy duty

Extended washing time for intensive wash of heavily soiled laundry.

### Signal

Select volume of the information signals. OFF – quiet – medium – loud – very loud

### Reduced ironing

Special spin cycle with final loosening up of laundry. Delicate final spin – moisture remaining in the laundry is slightly increased.

### Rinse plus

Auxiliary rinse cycle. Longer cycle duration. For areas with very soft water or for further improvement of rinse results.

### Start/Pause

To start or interrupt the cycle.

### For extra cycles

refer also to cycle overview

### Refresh

For rinsing unsoiled laundry (e.g. swimwear) and for removing detergent residue from fabric. Ends with a spin cycle.

### Soak

For pretreatment of heavily stained items. The soak cycle lasts two hours and ends with a short spin cycle.

### Emergency unlock, e.g. during power outage

- The cycle will continue when the power is back on. However, if the laundry should be removed, the loading door can be opened as described in the following:
- ⚠ **Danger of scalding!** Suds and laundry can be hot. Possibly let cool off first. Do not reach into the drum in case it is still turning. Do not open the loading door if water can be seen in the glass.
  - Set cycle selector to **Off** and remove plug from outlet.
  - Drain sudsy water → Page 9.
  - Pull the emergency unlock with a tool and release. The loading door can then be opened.

## Important information

### Taking care of laundry and machine

- Empty pockets.
- Look for metal parts (paper clips, etc.).
- Wash very delicate items in net bag (stockings, curtains, underwire bras).
- Close zippers, snaps, fasteners.
- Brush sand out of pockets and cuffs.
- Remove curtain slides or enclose in net bag.
- Remove curtain rings or tie them up in a net bag.

### Before the first wash

Do not add laundry! Open water tap, fill with approx. 1 liter water and afterwards fill ½ measuring cup of detergent into dispenser II. Select **Cotton Hot** cycle and then **Start/Pause**. At the end of the cycle, set the cycle selector to **Off**.

### Different types of soiled laundry

lightly soiled Wash new items separately.

heavily soiled Pretreat stains if necessary. Select auxiliary function **Heavy duty**. Add less laundry. Pretreat stains if necessary. Select auxiliary function **Heavy duty**.

### Starching

Do not use fabric softener in wash. Starching with liquid starch possible in all wash cycles. Add starch in fabric softener dispenser II according to manufacturer's instructions.

### Dying/ Removing color

Only dye in household quantities. Salt can corrode stainless steel! Follow instructions of the dye manufacturer! Do not remove color from laundry in the washing machine.

### Dispenser for liquid detergent

depending on model

Positioning the dispenser for dosing of liquid detergent:

- Completely remove dispensing drawer → Page 8.
- Push dispenser forwards.

Not using dispenser (push up):

- for gel-type detergent and powder detergent.

### Emergency unlock, e.g. during power outage

The cycle will continue when the power is back on. However, if the laundry should be removed, the loading door can be opened as described in the following:

- ⚠ **Danger of scalding!** Suds and laundry can be hot. Possibly let cool off first. Do not reach into the drum in case it is still turning. Do not open the loading door if water can be seen in the glass.
- Set cycle selector to **Off** and remove plug from outlet.
- Drain sudsy water → Page 9.
- Pull the emergency unlock with a tool and release. The loading door can then be opened.

### Overview of programs

Cycles	Temperature	max. Load up to:*	Type of washing
Cotton	cold, warm, hot	full load	Sturdy fabric, cotton or linen fabric that withstands very hot water
Sanitary	extra hot	1/2 load	Cotton, linen, synthetic or blended fabrics
KIDSCARE	warm, hot	1/2 load	Dark fabrics made of cotton and dark easy-care fabrics
Permanent press	cold, warm, hot	1/2 load	For delicate, washable fabrics, e.g. made of cotton, satin, synthetic fibers or blended fabrics (e.g. curtains); bulky items (e.g. comforters) can be washed with this cycle
Dark colors	cold, warm	1/2 load	Hand and machine washable wool/wool blend fabrics
Delicates	cold, warm	1/2 load	Fabrics for outdoor wear
Wool	cold, warm	1/2 load	For delicate, washable fabrics, e.g. made of silk, satin, synthetic fibers or blended fabrics
Sports wear	cold, warm	1/2 load	Hand washable fabrics
Silk/Satin	cold, warm	1/2 load	Easy-care fabrics made of cotton, linen, synthetic fibers or blended fabrics
Hand wash	cold, warm	1/2 load	Hand washable fabrics
Quick wash	cold, warm	1/2 load	Easy-care fabrics made of cotton, linen, synthetic fibers or blended fabrics



## Care



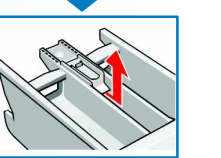
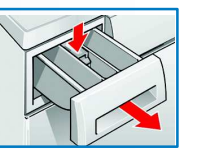
### Machine housing, control panel

- Wipe with soft, moist cloth.
- Do not use any scouring cleaning agent.
- Remove residues of detergent and cleaning agent immediately.
- Absolutely no cleaning with water jet.

### Clean dispensing drawer ...

... when there are detergent or fabric softener residues.

1. Pull out, press dispenser down, completely remove. Removing dispenser: Press the dispenser up from below with your finger.
2. Clean dispensing shell and dispenser with water and brush and dry off.
3. Set in dispenser and click in (stick the cylinder on the guide pin).
4. Push in dispensing drawer.



Leave dispensing drawer open, so that remaining water can dry.

### Washing drum

Leave the loading door open so that the drum can dry.  
Rust spots – use chlorine-free cleaner, no steel wool.

### Descaling *No laundry in the machine!*

Not necessary if proper amount of detergent used. In case it is needed follow the descaling agent manufacturer's instructions.

## Instructions in display panel *depending on model*

F: 17	Open water tap completely, supply hose kinked / pinched; Clean screen → Page 9; Water pressure too low.
F: 18	Oversudsing → Page 10; Clean pump → Page 9; Drain pipe / drain hose clogged.
F: 42, 43, 44	Motor malfunction. Call customer service!
Other displays	Turn off machine, wait 5 seconds and turn on again. If the display shows again, call customer service → Page 13.

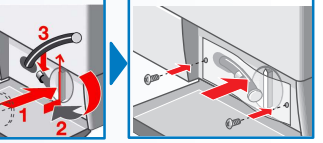
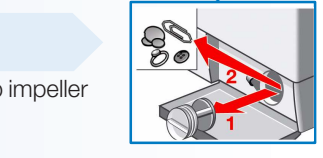
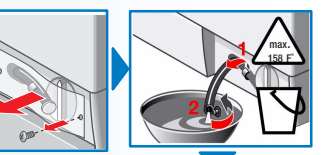
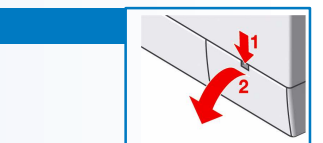
## Warranty



### Suds discharge pump

Set cycle selector to **Off**, unplug from power supply.

1. Open service door and remove.
2. Loosen screws and remove protective foil.
3. Remove emptying hose from the holder. Take off cap, let sudsy water drain out. Replace cap.
4. Carefully unscrew pump cap (remaining water).
5. Clean interior, threads of the pump cap and pump housing (pump impeller must be able to be turned).
6. Replace pump cap and screw on tightly, handle is vertical. Replace emptying hose in the holder.
7. Screw on protective foil.
8. Replace service door and close.



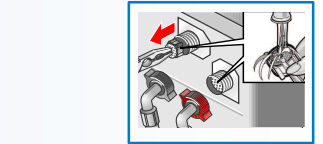
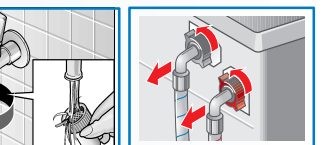
To prevent unused detergent from flowing into the outlet during the next wash: Pour 1 liter of water into dispenser II and start **Drain** cycle.

### Screen in water supply

Release water pressure in the supply hose:

1. Close water tap!
2. Select desired cycle (**except** for Spin/Drain).
3. Select **Start/Pause**. Let cycle run approx. 40 seconds.
4. Set cycle selector to **Off**. Unplug from main power supply!

- Cleaning screen:
1. Remove hose from water faucet.
    - Rinse the strainers under flowing water.
    - Remove hoses on the rear, take out screen with pliers and clean.
  2. Replace hose and check for leaks.



## What to do if ...

- Water is running out.
  - Fasten drain hose correctly / replace.
  - Tighten the screw connection of the supply hose.
- No water supply running in. Detergent not rinsed.
  - **Start/Pause** not selected?
  - Water tap not opened?
  - Screen possibly clogged? Clean screen → Page 9.
  - Supply hose kinked or pinched?
- The loading door will not open.
  - Safety function active. Cycle interrupted? → Page 4.
  - **no spin** (spin stop = without final spin) selected? → Page 4.
  - Opening only possible using emergency unlock? → Page 6.
- Cycle does not start.
  - **Start/Pause** or **Finish** in selected?
  - Loading door closed?
- Sudsy water is not pumped out.
  - Clean pump → Page 9.
  - Clean drain pipe and/or drain hose.
- Water cannot be seen in drum.
  - No malfunction – Water is below visible area.
- Spin results not satisfactory.
  - Wash small and large items together.
  - **Reduced ironing** selected? → Page 5.
  - Selected speed too slow? → Page 3.
- Spinning several times.
  - No malfunction – Imbalance control system equalizes imbalance.
- Dispenser not completely rinsed out.
  - Remove dispenser. Clean dispenser drawer and dispenser → Page 8.
- Odor in washing machine.
  - Run **Cotton Hot** cycle without laundry. Also use detergent.
- Foam comes out of the dispenser drawer.
  - Too much detergent added? Mix 1 tablespoon fabric softener with ½ liter water and put into dispenser II of the dispenser drawer.
  - Too much soap or non – HE soap used? Mix 1 tablespoon of fabric conditioner with 1 pt (½ liter) of water and pour into detergent dispenser II.
  - Reduce amount of detergent for next wash cycle.
- Strong odor, vibrations and "walking" during spinning.
  - Are machine feet fixed? Secure machine feet → *Installation instructions* Page 5.
  - Shipping lock removed? Remove shipping lock → *Installation instructions* Page 3.
- Display panel / indicator lights do not function during operation.
  - Power outage?
  - Fuse blown? Flip / replace fuse.
  - If the malfunction happens repeatedly, call customer service.
- Cycle runs longer than usual.
  - No malfunction – Imbalance control system equalizes imbalance by frequent distribution of the wash.
  - No malfunction – Foam control system is active – a rinse cycle is turned on.
- Detergent residue on the laundry.
  - Some phosphate-free detergents contain water insoluble residues.
  - Select **Refresh** or brush off the laundry after washing.
- Start/Pause** blinks very fast and a signal sounds in Pause condition.
  - Water level too high. Adding laundry not possible. If necessary close loading door immediately.
  - Select **Start/Pause** to continue the cycle.
- If a malfunction cannot be repaired by yourself or if a repair is necessary:
  - Set cycle selector to **Off** and remove the plug from main power supply.
  - Close water tap and call customer service → Page 13.

## Important Safety instructions

### WARNING

- To reduce the risk of fire, electric shock, serious injury or death when using your washing machine, follow basic precautions, including the following:
- BOSCH washers are provided with an Operating, Care and Installation Instructions Manual. Read and understand all instructions before using the washing machine.
  - Do not wash articles that have been previously cleaned, washed, soaked, or spotted with gasoline, dry cleaning solvents, other flammable or explosive substances as they give off vapors that could ignite or explode.
  - Do not add gasoline, dry cleaning solvents, or other flammable or explosive substances to the wash of water. These substances give off vapors that could ignite or explode.
  - Under certain conditions hydrogen gas may be produced in a hot water system that has not been used for 2 weeks or more. HYDROGEN GAS IS EXPLOSIVE. If the hot water system has not been used for this length of time, turn on all hot water faucets and let the water flow out of each faucet for several minutes before using the washing machine. This will release any accumulated hydrogen gas. As the gas is flammable, do not smoke or use an open flame while carrying out this procedure.
  - Caused by detergents containing solvents, e.g. stain remover/ items of washing pretreated with solvent naphtha may result in an explosion after being loaded into the washing machine. Before hand thoroughly rinse items of washing by hand.
  - Before the appliance is removed from service or discarded, remove the door and the power cord/plug.
  - Do not reach into the appliance if the wash drum is moving.
  - Do not install or store this appliance where it will be exposed to the weather.
  - Do not use bleach. Hazardous fumes can form.
  - Do not tamper with the controls.
  - Do not repair or replace any part of the appliance or attempt any service unless specifically recommended in the user maintenance instructions or in published user repair instructions that you understand and have the skills to carry out.
  - Always unplug the washing machine from the power supply before attempting any service. Disconnect the power cord by grasping the plug, not the cord.
  - To reduce the risk of fire, clothes, cleaning rags, mop heads and the like which have traces of any flammable substance, such as vegetable oil, cooking oil, petroleum based oils or distillates, waxes, fats, etc., must not be placed in the washing machine. These items may contain flammable substances which, even after washing, may smoke or catch fire.
  - Do not machine wash fiberglass materials (such as curtains and window coverings that use fiberglass materials). Small particles may remain in the washing machine and stick to fabrics in subsequent wash loads causing skin irritation.
  - When children become old enough to operate the appliance, it is legal responsibility of the parents or legal guardians to ensure that they are instructed in safe practices by qualified persons.
  - Do not allow children to play on or with appliance. Close supervision of children is necessary when the appliance is used near children.
  - Keep pets away from the washing machine.
  - Do not insert/pull out the power plug with wet hands.
  - Do not touch the door if washing at high temperatures.
  - Use caution when draining hot water.
  - Do not climb onto the washing machine and lean on the open door.
  - Do not sit or stand on the top of the washing machine.
  - To reduce the risk of fire or electrical shock, DO NOT use an extension cord or an adapter to connect the washing machine to the power supply.
  - The washing machine must only be used for its intended purpose.

## Important Safety instructions

- Always follow the fabric care instructions recommended by the clothing manufacturer.
  - Do not use the washing machine if it has a worn power cord or loose plug. Contact an authorized service agent.
  - Make sure that all water connections to the washing machine have shut-off valve(s) and are readily accessible. Close the washing machine water shut-off valve(s) at the end of each wash day.
  - Check the fill hose connections on a regular basis to ensure that they are tight and not leaking.
  - Always read and follow the instructions of the manufacturer of the detergent(s), cleaning aid(s), fabric softener(s) and static eliminator(s) which you are using. Heed all warnings and precautions.
  - Store all laundry chemicals and aids in a cool dry place according to the manufacturers' instructions.
  - To reduce the risk of poisoning or chemical burns, keep all cleaning products out of the reach of children.
  - Do not operate the washing machine if any guards, panels and/or fasteners except transport fixing bolts have been removed. Check the fill hose connections on a regular basis to ensure that they are tight and not leaking.
  - Do not operate the washing machine if parts are missing or broken.
  - Do not bypass any safety devices.
  - To avoid floor damage and mold growth, do not let spills or splashes cause standing water around or under the appliance.
  - Do not operate this washing machine until you are sure that:
    - a. the washing machine has been installed according to the INSTALLATION INSTRUCTIONS.
    - b. all water, drain, power and grounding connections are in compliance with all local regulations and/or other applicable regulations and requirements.
  - Failure to install, maintain and/or operate the washing machine according to the manufacturer's instructions may result in injury and/or damage.
  - Check the fill hose connections on a regular basis to ensure that they are tight and not leaking.
  - Removing any panel, including the service panel in the front can expose sharp edges and points, electrical connections and hot surfaces.
  - To avoid damage to the door, do not push against the door when moving the unit. Precautions should be taken to avoid damage to the floor.
  - The water connections should be made and tested before electrical power is applied to the machine.
- Notes:**
- The IMPORTANT SAFEGUARDS and WARNINGS indicated in this manual do not cover all possible conditions which may occur. Common sense, caution and care must be exercised when installing, maintaining or operating the washing machine.
  - Always contact your dealer, distributor, service agent or the manufacturer about any problems or conditions that you do not understand.
- GROUNDING INSTRUCTIONS**
- This appliance must be grounded. In the event of a malfunction or breakdown, grounding will reduce the risk of electric shock by providing a path of least resistance for the electric current. This appliance is equipped with a cord that has an equipment-grounding conductor and a grounding plug. The plug must be plugged into an appropriate outlet that is properly installed and grounded in accordance with all local codes and ordinances.
  - Improper connection of the equipment grounding conductor can result in electric shock. Connect to individual Branch Circuit. Check with a qualified electrician or serviceman if you are in doubt as to whether the washer is properly grounded. DO NOT modify the plug provided with the appliance – if it will not fit the outlet have a proper outlet installed by a qualified electrician.
- **KEEP THESE INSTRUCTIONS FOR FUTURE REFERENCE**
- In case of change of ownership, manual should be conveyed with the washer.**
- SAVE THESE INSTRUCTIONS.**

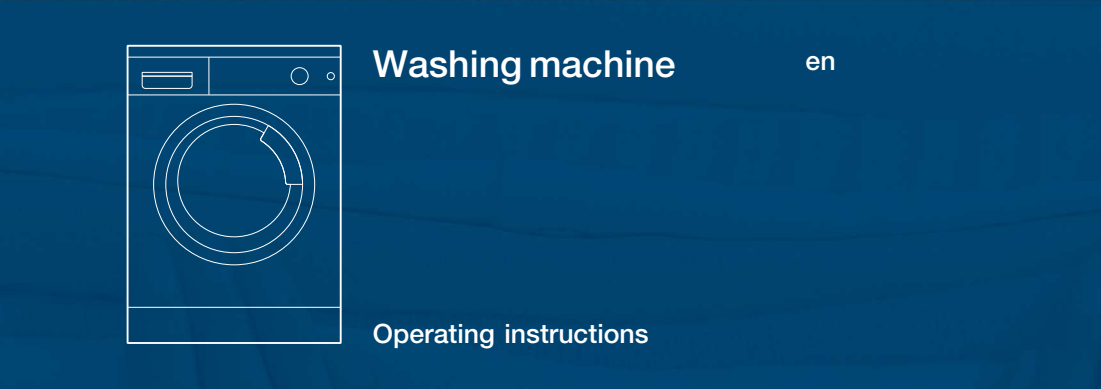
## Statement of warranties for Bosch washing machines

The warranties provided by BSH Home Appliances ("Bosch") in this Statement of Warranties apply only to Bosch washing machines sold to the first using purchaser by Bosch or its authorized dealers, retailers or service centers in the United States or Canada. The Warranties provided herein are not transferable.

1 Year Full Limited Warranty From Date of Installation*	Bosch will repair or replace, free of charge, any component part that proves defective under conditions of normal home use, labor and shipping costs included. Warranty repair service must be performed by an authorized Bosch Service Center (excluded cosmetic parts).
2 Year Limited Warranty From Date of Installation*	Bosch will provide replacement parts, free of charge, for any component part that proves defective under conditions of normal home use, shipping costs included, labor charges excluded.
2 Year Limited Warranty on Electronics From Date of Installation*	Bosch will repair or replace, free of charge, any microprocessor or printed circuit board that proves defective under conditions of normal home use for the first two years from the date of original installation, labor charges excluded.
2 Year Limited Warranty on Motor From Date of Installation*	Bosch will repair or replace, free of charge, any motor or component part of the motor that proves defective under conditions of normal home use for the first two years from the date of original installation, labor charges excluded.

\* Date of installation shall refer to the earlier date the washing machine is installed or ten business days after the delivery date.

1. This warranty does not cover service calls or repairs to correct the installation of the washing machine, to provide instructions on the use of your washing machine, to replace house fuses or correct plumbing or the electric wiring in your home or to repair any washing machine that is used in a manner other than what is normal and customary for home use.
2. In addition, the warranties provided in this Statement exclude any defects or damage arising from accident, alteration, misuse, abuse, improper installation, unauthorized service work, external forces beyond Bosch's control, such as fire, flood, and other acts of God, or installation not in accordance with local electrical and plumbing codes. Labor charges incurred in the repair or replacement of any washing machine after a period of one year from date of installation shall not be covered by this warranty.
3. TO THE EXTENT PERMITTED BY LAW, THIS WARRANTY IS IN LIEU OF ALL OTHER EXPRESSED AND IMPLIED WARRANTIES, INCLUDING THE IMPLIED WARRANTIES OF MERCHANTABILITY AND FITNESS FOR A PARTICULAR PURPOSE. BOSCH DOES NOT ASSUME ANY RESPONSIBILITY FOR INCIDENTAL OR CONSEQUENTIAL DAMAGES. TO OBTAIN WARRANTY SERVICE, CONTACT THE NEAREST BOSCH AUTHORIZED SERVICE CENTER OR CALL 1-800-944-2904 OR WRITE TO: BSH HOME APPLIANCES ATTN. SERVICE 5551 MC FADDEN AVE. HUNTINGTON BEACH, CA 92649
4. BE SURE TO PROVIDE YOUR WASHING MACHINE MODEL NUMBER, SERIAL NUMBER, PURCHASE DATE, THE SELLER'S NAME AND ADDRESS, DATE PROBLEM OCCURRED, EXPLANATION OF PROBLEM, DAYTIME TELEPHONE NUMBER WHERE YOU CAN BE REACHED AND A COPY OF THE SALES INVOICE.



Read these instructions before switching on the washing machine! Also follow the separate Installation instructions. Follow the safety instructions on pages 11/12!



# Your washing machine

**Congratulations** – You have chosen a modern, high-quality home appliance from Bosch. The washing machine features both water and energy savings.

Every machine that leaves our factory is carefully tested for function and perfect condition.

## Contents

■ Intended use .....	1
■ Cycles .....	1
■ Preparation .....	2
■ Setting cycle .....	3
■ Washing .....	3/4
■ After washing .....	4
■ Individual settings .....	5
■ Important information .....	6
■ Overview of programs .....	7
■ Care .....	8
■ Instructions in display panel .....	8
■ Warranty .....	9
■ What to do if ... ..	10
■ Important Safety instructions .....	11/12
■ Warranties .....	13



### Environmental protection/ Tips for energy saving

- We recommend **HE (High efficiency) detergents** because they are particularly designed to deliver optimum performance from your front-loading washer. **Not using HE detergent could cause problems such as oversudsing, extended cycle periods, or a decrease in wash performance.**
- Utilize the maximum amount of laundry for the appropriate cycle.
- Avoid using too much detergent.
- Add detergent according to manufacturer's instruction and water hardness.
- If the laundry will be dried in a dryer afterwards, select spin speed according to the dryer manufacturer's instructions.

## Intended use

- exclusively for private residential use,
- for washing machine-washable fabrics in sudsy water,
- for operation using cold and hot (140 °F/60 °C) tap water and conventional additives that are suitable for use in residential washing machines.

- ⚠ – Never leave children unattended by the washing machine!
- Keep children away from shipping carton and packaging components. Danger of suffocation from plastic foil and folding cartons.
- Keep pets away from the washing machine!

### Cycles

Detailed cycle overview → Page 7.

Temperature and spin speed can be selected individually depending on the cycle selected and cycle progress.

<b>Cotton</b>	} sturdy fabrics
<b>Permanent press</b>	
<b>KIDSCARE</b>	
<b>Sanitary</b>	
<b>Wool</b> .....	hand/machine washable wool
<b>Sports Wear</b> .....	microfiber fabrics
<b>Silk/Satin</b> .....	delicate washable fabrics
<b>Quick wash</b> .....	short cycle
<b>Hand wash</b> .....	hand washable fabrics
<b>Dark Colors</b> .....	dark washable fabrics
<b>Delicates</b> .....	delicate washable fabrics
<b>Drain</b> .....	drain water without going through a spin cycle ( <b>no spin</b> )
<b>Spin</b> .....	extra spin with variable spin speed
<b>Refresh</b> .....	extra rinse with spin
<b>Soak</b> .....	integrated soak cycle for pre-treating of heavily stained items

## Preparation

⚠ Install machine correctly according to separate installation instructions.



### Check machine

- Never start a damaged machine!
- Contact your customer service!



### Plug machine into power outlet

⚠ Only with dry hands!  
Only touch the plug!

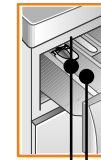


### Open water tap

Dispenser for liquid detergent (depending on model), Page 6.

**Dispenser II:** Detergent for main wash, water softener, spot remover

**Dispenser** ☼: Fabric softener, starch



Additional functions
Display panel/  
Options buttons
Cycle

Signal

Heavy duty

Reduced ironing

Rinse plus

Temp

Finish In

Spin

**KIDSCARE**

- Silk/Satin
- Dark colors
- Sports wear
- Quick wash
- Hand wash
- Refresh

(cold - extra hot)	Temp	Select the temperature <b>cold, warm, hot</b>
(1 - 24h)	Finish in	Cycle ends in ...
(no spin - max)	Spin	Select the spin speed <b>max or no spin</b>
Status displays (wash - --0-)		Cycle progress of <b>wash, rinse, spin</b>

**Before the first wash**  
run one time with no laundry. See Page 6

### Sort laundry and fill washer

Follow care instructions of the manufacturer!  
According to the care instructions tag.  
According to type, color, soiling and temperature.  
Do not exceed maximum load -> Page 7.

Pay attention to important information! Page 6!

Fill with large and small items of laundry! Close loading door.  
Do not catch pieces of laundry between the door and the rubber seal.

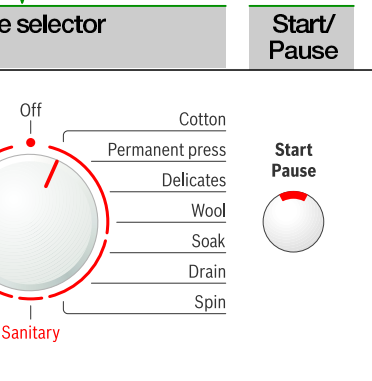
### Fill detergent and fabric softener

Measure detergent according to:  
Size of wash load, amount of soiling, water hardness (contact your local water supplier) and manufacturer's instructions.  
For models without dispenser for liquid detergent.  
Fill the liquid detergent in the appropriate measuring container and place in the drum.  
During operation: Be careful when opening the dispensing drawer!

**i** Thick fabric softeners or stiffeners should be thinned with water. Prevents clogging.  
We recommend **HE (High efficiency)** detergents.

### Setting and adjusting cycle

Auxiliary functions and option buttons, see individual settings -> Page 5.



### Select Start/Pause

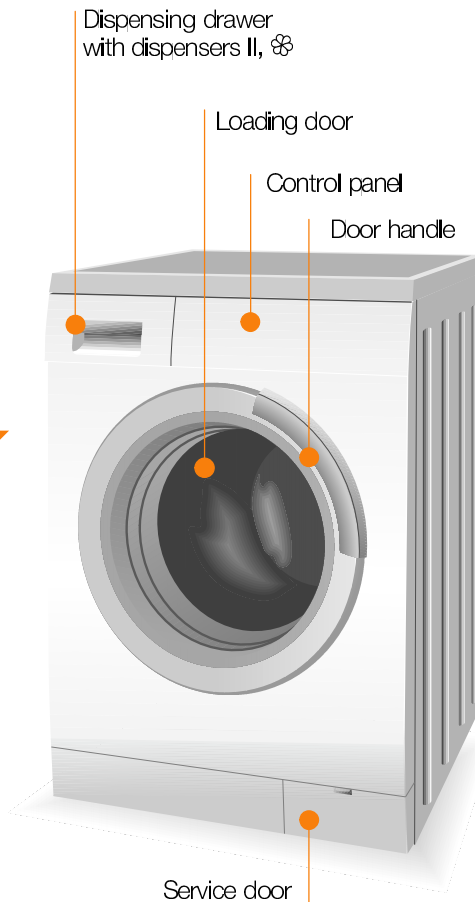
**i** All buttons are sensitive and only need to be touched briefly!  
Continued pressing of the option button causes automatic sequence of the setting options.

**i** Cycle selector for turning the machine on and off and to select the cycle. Possible to turn in both directions.

Temperature: **gentle, reduced, regular,**  
(Rinse hold = without final spin)

displays:  
**in, -0-**

# Washing



1

2

3

# Washing

### Remove laundry

Open loading door and remove laundry.  
Falls **no spin** (spin stop = without final spin) active:  
Select spin speed or set cycle selector to **Drain** or **Spin**.  
Select **Start/Pause**.  
Remove any existing foreign objects – Risk of rust.

### Close water taps

### Turn off

Set cycle selector to **Off**.

### Cycle end if ...

... **-0-** is indicated on the display panel.

### Change cycle ...

If you mistakenly selected the wrong cycle:  
– Select the cycle again.  
– Select **Start/Pause**.

### Interrupt cycle ...

– Select **Start/Pause**.  
– If necessary add more laundry. (Do not leaving loading door open for a long period of time, water could run out of the washing machine.)  
– Select **Start/Pause**.

### ... or stop cycle

For cycles with high temperature:  
– Cool down wash: Select **Refresh**.  
– Select **Start/Pause**.  
For cycles with lower temperature:  
– Select **Spin** or **Drain**.  
– Select **Start/Pause**.

# Individual settings

## Option buttons

The spin speed and temperature can be changed before and while the cycle is running. Effect depends on cycle progress.

## Temp

The displayed wash temperature can be changed. The maximum wash temperature that can be selected depends on the cycle that was set.

## Finish in

When selecting the cycle, the respective time until the end of the cycle is displayed. Adjustable in hour steps, up to a max. of 24h. Select the **Finish in** button until the desired number of hours is displayed (h=hour). Select **Start/Pause**. No setting possibilities after cycle begins.

## Spin

The displayed spin speed can be changed. The maximum spin speed that can be selected depends on the cycle that was set.

## Auxiliary functions *refer also to cycle overview*

<b>Heavy duty</b>	Extended washing time for intensive wash of heavily soiled laundry.
<b>Signal</b>	Select volume of the information signals. OFF – quiet – medium – loud – very loud
<b>Reduced ironing</b>	Special spin cycle with final loosening up of laundry. Delicate final spin – moisture remaining in the laundry is slightly increased.
<b>Rinse plus</b>	Auxiliary rinse cycle. Longer cycle duration. For areas with very soft water or for further improvement of rinse results.

## Start/Pause

To start or interrupt the cycle.

# Cycle settings

## For extra cycles *refer also to cycle overview*

<b>Refresh</b>	For rinsing unsoiled laundry (e.g. swimwear) and for removing detergent residue from fabric. Ends with a spin cycle.
<b>Soak</b>	For pretreatment of heavily stained items. The soak cycle lasts two hours and ends with a short spin cycle.



# Important information



## Taking care of laundry and machine

- Empty pockets.
- Look for metal parts (paper clips, etc.).
- Wash very delicate items in net bag (stockings, curtains, underwire bras).
- Close zippers, snaps, fasteners.
- Brush sand out of pockets and cuffs.
- Remove curtain slides or enclose in net bag.
- Remove curtain rings or tie them up in a net bag.



## Before the first wash

Do not add laundry! Open water tap, fill with approx. 1 liter water and afterwards fill ½ measuring cup of detergent into dispenser II. Select **Cotton Hot** cycle and then **Start/Pause**. At the end of the cycle, set the cycle selector to **Off**.



## Different types of soiled laundry

lightly soiled



Wash new items separately.

heavily soiled



Pretreat stains if necessary. Select auxiliary function **Heavy duty**.

Add less laundry.  
Pretreat stains if necessary. Select auxiliary function **Heavy duty**.



## Starching

*Do not use fabric softener in wash*

Starching with liquid starch possible in all wash cycles. Add starch in fabric softener dispenser ☞ according to manufacturer's instructions.



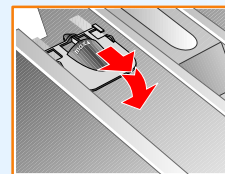
## Dyeing/ Removing color

Only dye in household quantities. Salt can corrode stainless steel!  
Follow instructions of the dye manufacturer!  
Do **not** remove color from laundry in the washing machine.



## Dispenser for liquid detergent

*depending on model*

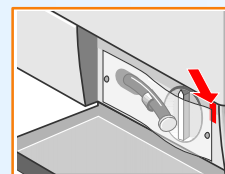


Positioning the dispenser for dosing of liquid detergent:

- Completely remove dispensing drawer → Page 8.
  - Push dispenser forwards.
- Not using dispenser (push up):
- for gel-type detergent and powder detergent.



## Emergency unlock, e.g. during power outage



The cycle will continue when the power is back on. However, if the laundry should be removed, the loading door can be opened as described in the following:



*Danger of scalding!  
Suds and laundry can be hot.  
Possibly let cool off first.*

*Do not reach into the drum in case it is still turning.  
Do not open the loading door if water can be seen in the glass.*

- Set cycle selector to **Off** and remove plug from outlet.
- Drain sudsy water → Page 9.
- Pull the emergency unlock with a tool and release. The loading door can then be opened.

# Overview of programs

see also Page 6

**Cycles**    **Temperature**    **max. Load up to:\***    **Type of washing**         **Options; information**

Cycles	Temperature	max. Load up to:*	Type of washing	Options; information
<b>Cotton</b>	cold, warm, hot	full load	Sturdy fabric, cotton or linen fabric that withstands very hot water	<b>Heavy duty, Rinse plus, Reduced ironing, Signal</b>
<b>Sanitary</b>	<b>extra hot</b>			<b>Heavy duty, Rinse plus, Reduced ironing, Signal</b>
<b>KIDSCARE</b>	warm, hot			<b>Heavy duty, Rinse plus, Reduced ironing, Signal</b>
<b>Permanent press</b>	cold, warm, hot	½ load	Cotton, linen, synthetic or blended fabrics	<b>Heavy duty, Rinse plus, Reduced ironing, Signal;</b> reduced rinse and final spin cycle
<b>Dark colors</b>			Dark fabrics made of cotton and dark easy-care fabrics	<b>Heavy duty, Rinse plus, Reduced ironing, Signal</b> only short spin, peg out dripping wet
<b>Delicates</b>			For delicate, washable fabrics, e.g. made of cotton, satin, synthetic fibers or blended fabrics (e.g. curtains); bulky items (e.g. comforters) can be washed with this cycle	<b>Heavy duty, Rinse plus, Reduced ironing, Signal;</b> spinning only between rinse cycles
<b>Wool</b>	cold, warm	⅓ load	Hand and machine washable wool/wool blend fabrics	Especially gentle washing cycle; to avoid shrinkage, long cycle pauses (clothing rests in sudsy water)
<b>Sports wear</b>			Fabrics for outdoor wear	<b>Heavy duty, Rinse plus, Reduced ironing, Signal</b> only short spin between the rinse cycles
<b>Silk/Satin</b>			For delicate, washable fabrics, e.g. made of silk, satin, synthetic fibers or blended fabrics	also suitable for hand-washable silk; reduced final spin cycle
<b>Hand wash</b>			Hand washable fabrics	short cycle
<b>Quick wash</b>	cold, warm		Easy-care fabrics made of cotton, linen, synthetic fibers or blended fabrics	
<b>Additional cycles</b>				

**Drain, Spin, Refresh, Soak**

**i** The cycles are time-controlled for lightly soiled fabrics. If fabrics are heavily soiled, reduce the load or select additional functions, e.g. **Heavy duty**.

\* For best results, it is recommended to load the drum depending on the fabric type:

**full load:** Cottons and Linens; ½ **load:** Permanent Press, Synthetic Blends and Poly Knits; ⅓ **load:** Wool, Delicates; Silk

Further information and a selection of our products can be found on our Web site:  
www.boschappliances.com

BSH Home Appliances  
5551 Mc Fadden Ave.  
Huntington Beach, CA 92649

9000 255 948  
1107  
WAS24460UC

# Care



- Risk of electric shock!  
Unplug from main power supply!
- Danger of explosion! No solvents!

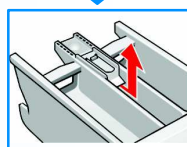
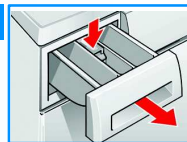
## **i** Machine housing, control panel

- Wipe with soft, moist cloth.
- Do not use any scouring cleaning agent.
- Remove residues of detergent and cleaning agent immediately.
- Absolutely no cleaning with water jet.

## **h** Clean dispensing drawer ...

... when there are detergent or fabric softener residues.

1. Pull out, press dispenser down, completely remove.  
Removing dispenser: Press the dispenser up from below with your finger.
2. Clean dispensing shell and dispenser with water and brush and dry off.
3. Set in dispenser and click in (stick the cylinder on the guide pin).
4. Push in dispensing drawer.



**i** Leave dispensing drawer open, so that remaining water can dry.

## **i** Washing drum

Leave the loading door open so that the drum can dry.  
Rust spots – use chlorine-free cleaner, no steel wool.

## **i** Descaling *No laundry in the machine!*

Not necessary if proper amount of detergent used. In case it is needed follow the descaling agent manufacturer's instructions.

# Instructions in display panel *depending on model*

F: 17	Open water tap completely, supply hose kinked / pinched; Clean screen -> Page 9; Water pressure too low.
F: 18	Oversudsing -> Page 10; Clean pump -> Page 9; Drain pipe / drain hose clogged.
F: 42, 43, 44	Motor malfunction. Call customer service!
Other displays	Turn off machine, wait 5 seconds and turn on again. If the display shows again, call customer service -> Page 13.

# Warranty

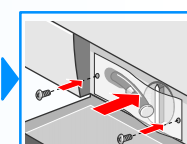
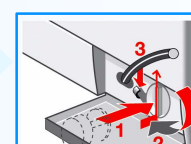
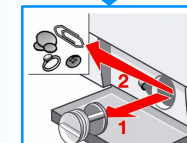
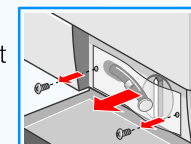
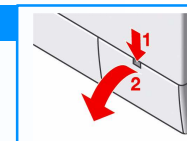


- Danger of scalding!  
Let sudsy water cool down!
- Close water tap!

## **h** Suds discharge pump

Set cycle selector to **Off**, unplug from power supply.

1. Open service door and remove.
2. Loosen screws and remove protective foil.
3. Remove emptying hose from the holder. Take off cap, let sudsy water drain out. Replace cap.
4. Carefully unscrew pump cap (remaining water).
5. Clean interior, threads of the pump cap and pump housing (pump impeller must be able to be turned).
6. Replace pump cap and screw on tightly, handle is vertical. Replace emptying hose in the holder.
7. Screw on protective foil.
8. Replace service door and close.



**i** To prevent unused detergent from flowing into the outlet during the next wash: Pour 1 liter of water into dispenser II and start **Drain** cycle.

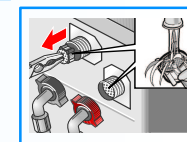
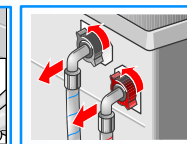
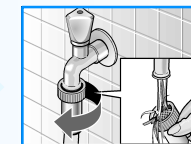
## **h** Screen in water supply

Release water pressure in the supply hose:

1. Close water tap!
2. Select desired cycle (**except** for Spin/Drain).
3. Select **Start/Pause**. Let cycle run approx. 40 seconds.
4. Set cycle selector to **Off**. Unplug from main power supply!

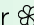
Cleaning screen:

1. Remove hose from water faucet.
  - Rinse the strainers under flowing water.
  - Remove hoses on the rear, take out screen with pliers and clean.
2. Replace hose and check for leaks.





## What to do if ...

- Water is running out.
  - Fasten drain hose correctly / replace.
  - Tighten the screw connection of the supply hose.
- No water supply running in. Detergent not rinsed.
  - **Start/Pause** not selected?
  - Water tap not opened?
  - Screen possibly clogged? Clean screen → Page 9.
  - Supply hose kinked or pinched?
- The loading door will not open.
  - Safety function active. Cycle interrupted? → Page 4.
  - **no spin** (spin stop = without final spin) selected? → Page 4.
  - Opening only possible using emergency unlock? → Page 6.
- Cycle does not start.
  - **Start/Pause** or **Finish in** selected?
  - Loading door closed?
- Sudsy water is not pumped out.
  - Clean pump → Page 9.
  - Clean drain pipe and/or drain hose.
- Water cannot be seen in drum.
  - No malfunction – Water is below visible area.
- Spin results not satisfactory.
  - Wash small and large items together.
  - **Reduced ironing** selected? → Page 5.
  - Selected speed too slow? → Page 3.
- Spinning several times.
  - No malfunction – Imbalance control system equalizes imbalance.
- Dispenser  not completely rinsed out.
  - Remove dispenser. Clean dispenser drawer and dispenser → Page 8.
- Odor in washing machine.
  - Run **Cotton Hot** cycle without laundry. Also use detergent.
- Foam comes out of the dispenser drawer.
  - Too much detergent added?  
Mix 1 tablespoon fabric softener with ½ liter water and put into dispenser II of the dispenser drawer.
  - Too much soap or non – HE soap used?  
Mix 1 tablespoon of fabric conditioner with 1 pt ( ½ liter) of water and pour into detergent dispenser II.
  - Reduce amount of detergent for next wash cycle.
- Strong odor, vibrations and "walking" during spinning.
  - Are machine feet fixed?  
Secure machine feet → Installation instructions Page 5.
  - Shipping lock removed?  
Remove shipping lock → Installation instructions Page 3.
- Display panel / indicator lights do not function during operation.
  - Power outage?
  - Fuse blown? Flip / replace fuse.
  - If the malfunction happens repeatedly, call customer service.
- Cycle runs longer than usual.
  - No malfunction – Imbalance control system equalizes imbalance by frequent distribution of the wash.
  - No malfunction – Foam control system is active – a rinse cycle is turned on.
- Detergent residue on the laundry.
  - Some phosphate-free detergents contain water insoluble residues.
  - Select **Refresh** or brush off the laundry after washing.
- **Start/Pause** blinks very fast and a signal sounds in Pause condition.
  - Water level too high. Adding laundry not possible. If necessary close loading door immediately.
  - Select Start/Pause to continue the cycle.
- If a malfunction cannot be repaired by yourself or if a repair is necessary:
  - Set cycle selector to **Off** and remove the plug from main power supply.
  - Close water tap and call customer service → Page 13.



## Important Safety instructions

### ⚠ WARNING ⚠

- To reduce the risk of fire, electric shock, serious injury or death when using your washing machine, follow basic precautions, including the following:
- BOSCH washers are provided with an Operating, Care and Installation Instructions Manual. Read and understand all instructions before using the washing machine.
  - Do not wash articles that have been previously cleaned, washed, soaked, or spotted with gasoline, dry cleaning solvents, other flammable or explosive substances as they give off vapors that could ignite or explode.
  - Do not add gasoline, dry cleaning solvents, or other flammable or explosive substances to the wash of water. These substances give off vapors that could ignite or explode.
  - Under certain conditions hydrogen gas may be produced in a hot water system that has not been used for 2 weeks or more. HYDROGEN GAS IS EXPLOSIVE. If the hot water system has not been used for this length of time, turn on all hot water faucets and let the water flow out of each faucet for several minutes before using the washing machine. This will release any accumulated hydrogen gas. As the gas is flammable, do not smoke or use an open flame while carrying out this procedure.
  - Caused by detergents containing solvents, e.g. stain remover/ items of washing pretreated with solvent naphtha may result in an explosion after being loaded into the washing machine. Before hand thoroughly rinse items of washing by hand.
  - Before the appliance is removed from service or discarded, remove the door and the power cord/plug.
  - Do not reach into the appliance if the wash drum is moving.
  - Do not install or store this appliance where it will be exposed to the weather.
  - Do not use bleach. Hazardous fumes can form.
  - Do not tamper with the controls.
  - Do not repair or replace any part of the appliance or attempt any service unless specifically recommended in the user maintenance instructions or in published user repair instructions that you understand and have the skills to carry out.
  - Always unplug the washing machine from the power supply before attempting any service. Disconnect the power cord by grasping the plug, not the cord.
  - To reduce the risk of fire, clothes, cleaning rags, mop heads and the like which have traces of any flammable substance, such as vegetable oil, cooking oil, petroleum based oils or distillates, waxes, fats, etc., must not be placed in the washing machine. These items may contain flammable substances which, even after washing, may smoke or catch fire.
  - Do not machine wash fiberglass materials (such as curtains and window coverings that use fiberglass materials). Small particles may remain in the washing machine and stick to fabrics in subsequent wash loads causing skin irritation.
  - When children become old enough to operate the appliance, it is legal responsibility of the parents or legal guardians to ensure that they are instructed in safe practices by qualified persons.
  - Do not allow children to play on or with appliance. Close supervision of children is necessary when the appliance is used near children.
  - Keep pets away from the washing machine.
  - Do not insert/pull out the power plug with wet hands.
  - Do not touch the door if washing at high temperatures.
  - Use caution when draining hot water.
  - Do not climb onto the washing machine and lean on the open door.
  - Do not sit or stand on the top of the washing machine.
  - To reduce the risk of fire or electrical shock, DO NOT use an extension cord or an adapter to connect the washing machine to the power supply.
  - The washing machine must only be used for its intended purpose.



## Important Safety instructions

- Always follow the fabric care instructions recommended by the clothing manufacturer.
- Do not use the washing machine if it has a worn power cord or loose plug. Contact an authorized service agent.
- Make sure that all water connections to the washing machine have shut-off valve(s) and are readily accessible. Close the washing machine water shut-off valve(s) at the end of each wash day.
- Check the fill hose connections on a regular basis to ensure that they are tight and not leaking.
- Always read and follow the instructions of the manufacturer of the detergent(s), cleaning aid(s), fabric softener(s) and static eliminator(s) which you are using. Heed all warnings and precautions.
- Store all laundry chemicals and aids in a cool dry place according to the manufacturers' instructions.
- To reduce the risk of poisoning or chemical burns, keep all cleaning products out of the reach of children.
- Do not operate the washing machine if any guards, panels and/or fasteners except transport fixing bolts have been removed.  
Check the fill hose connections on a regular basis to ensure that they are tight and not leaking.
- Do not operate the washing machine if parts are missing or broken.
- Do not bypass any safety devices.
- To avoid floor damage and mold growth, do not let spills or splashes cause standing water around or under the appliance.
- Do not operate this washing machine until you are sure that:
  - a. the washing machine has been installed according to the INSTALLATION INSTRUCTIONS.
  - b. all water, drain, power and grounding connections are in compliance with all local regulations and/or other applicable regulations and requirements.
- Failure to install, maintain and/or operate the washing machine according to the manufacturer's instructions may result in injury and/or damage.
- Check the fill hose connections on a regular basis to ensure that they are tight and not leaking.
- Removing any panel, including the service panel in the front can expose sharp edges and points, electrical connections and hot surfaces.
- To avoid damage to the door, do not push against the door when moving the unit. Precautions should be taken to avoid damage to the floor.
- The water connections should be made and tested before electrical power is applied to the machine.

### Notes:

- The IMPORTANT SAFEGUARDS and WARNINGS indicated in this manual do not cover all possible conditions which may occur. Common sense, caution and care must be exercised when installing, maintaining or operating the washing machine.
- Always contact your dealer, distributor, service agent or the manufacturer about any problems or conditions that you do not understand.

### GROUNDING INSTRUCTIONS

- This appliance must be grounded. In the event of a malfunction or breakdown, grounding will reduce the risk of electric shock by providing a path of least resistance for the electric current. This appliance is equipped with a cord that has an equipment-grounding conductor and a grounding plug. The plug must be plugged into an appropriate outlet that is properly installed and grounded in accordance with all local codes and ordinances.
- Improper connection of the equipment grounding conductor can result in electric shock. Connect to individual Branch Circuit. Check with a qualified electrician or serviceman if you are in doubt as to whether the washer is properly grounded. DO NOT modify the plug provided with the appliance – if it will not fit the outlet have a proper outlet installed by a qualified electrician.

### – KEEP THESE INSTRUCTIONS FOR FUTURE REFERENCE

In case of change of ownership, manual should be conveyed with the washer.

SAVE THESE INSTRUCTIONS.

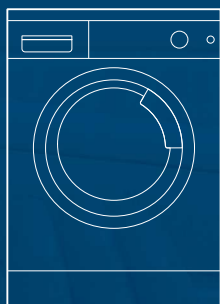
## Statement of warranties for Bosch washing machines

The warranties provided by BSH Home Appliances ("Bosch") in this Statement of Warranties apply only to Bosch washing machines sold to the first using purchaser by Bosch or its authorized dealers, retailers or service centers in the United States or Canada. The Warranties provided herein are not transferable.

1 Year Full Limited Warranty From Date of Installation*	Bosch will repair or replace, free of charge, any component part that proves defective under conditions of normal home use, labor and shipping costs included. Warranty repair service must be performed by an authorized Bosch Service Center (excluded cosmetic parts).
2 Year Limited Warranty From Date of Installation*	Bosch will provide replacement parts, free of charge, for any component part that proves defective under conditions of normal home use, shipping costs included, labor charges excluded.
2 Year Limited Warranty on Electronics From Date of Installation*	Bosch will repair or replace, free of charge, any microprocessor or printed circuit board that proves defective under conditions of normal home use for the first two years from the date of original installation, labor charges excluded.
2 Year Limited Warranty on Motor From Date of Installation*	Bosch will repair or replace, free of charge, any motor or component part of the motor that proves defective under conditions of normal home use for the first two years from the date of original installation, labor charges excluded.

\* Date of installation shall refer to the earlier date the washing machine is installed or ten business days after the delivery date.

1. This warranty does not cover service calls or repairs to correct the installation of the washing machine, to provide instructions on the use of your washing machine, to replace house fuses or correct plumbing or the electric wiring in your home or to repair any washing machine that is used in a manner other than what is normal and customary for home use.
2. In addition, the warranties provided in this Statement exclude any defects or damage arising from accident, alteration, misuse, abuse, improper installation, unauthorized service work, external forces beyond Bosch's control, such as fire, flood, and other acts of God, or installation not in accordance with local electrical and plumbing codes. Labor charges incurred in the repair or replacement of any washing machine after a period of one year from date of installation shall not be covered by this warranty.
3. TO THE EXTENT PERMITTED BY LAW, THIS WARRANTY IS IN LIEU OF ALL OTHER EXPRESSED AND IMPLIED WARRANTIES, INCLUDING THE IMPLIED WARRANTIES OF MERCHANTABILITY AND FITNESS FOR A PARTICULAR PURPOSE. BOSCH DOES NOT ASSUME ANY RESPONSIBILITY FOR INCIDENTAL OR CONSEQUENTIAL DAMAGES. TO OBTAIN WARRANTY SERVICE, CONTACT THE NEAREST BOSCH AUTHORIZED SERVICE CENTER OR CALL 1-800-944-2904 OR WRITE TO:  
BSH HOME APPLIANCES  
ATTN. SERVICE  
5551 MC FADDEN AVE.  
HUNTINGTON BEACH, CA 92649
4. BE SURE TO PROVIDE YOUR WASHING MACHINE MODEL NUMBER, SERIAL NUMBER, PURCHASE DATE, THE SELLER'S NAME AND ADDRESS, DATE PROBLEM OCCURRED, EXPLANATION OF PROBLEM, DAYTIME TELEPHONE NUMBER WHERE YOU CAN BE REACHED AND A COPY OF THE SALES INVOICE.



Washing machine

en

Operating instructions



**BOSCH**



Read these instructions before switching on the washing machine!  
Also follow the separate Installation instructions.  
Follow the safety instructions on pages 11/12!